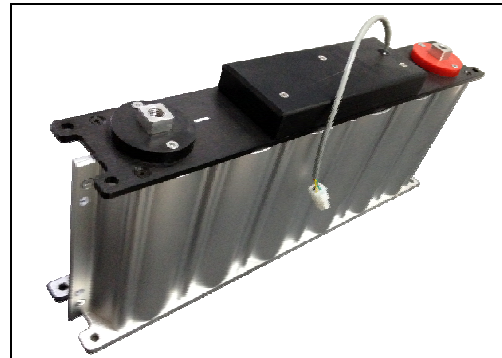


**Features**

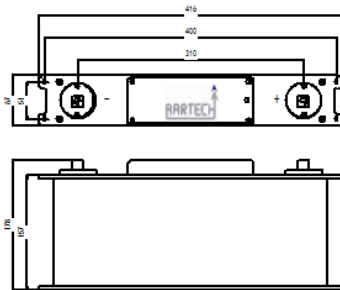
- High power performance
- Low ESR
- Over 1,000,000 duty cycles
- Welded terminal

**Applications**

- Pitching control system of Wind Turbine Generator
- EV/HEV
- Hybrid drive trains
- Mass transportation braking energy recovery system
- UPS/DVC
- Heavy duty machinery
- Locomotive engine startup system



**Dimension**



Dimension(mm)			
Capacitance	L	W	H
500F	420	67	197

**Specifications**

Part Number	MCP0500C0-0016R0
Capacitance (F)	500
Maximum ESR (mΩ)	1.60
Nominal Leakage Current (mA) @ 20°C after 72 Hours	0.87
Working Voltage	16.0 VDC
Surge Voltage	17.0 VDC
Capacitance Tolerance	-10% to +20% (25°C)
Operating Temperature Range	-40°C to 65°C, Δ C<20%, Δ ESR<50% of initial measured value@ 25°C
Storage Temperature Range	-40°C to 70°C
Life Time	10 years, Δ C<30%, Δ ESR<150% of specified value, LC< specified value @ 25°C
Cycle Life( 25°C)	1,000,000 cycles, Cycled between rated voltage and 1/2 rated voltage under constant current @ 25°C

AARTECH 2011 All Rights reserved. Design, Specifications are subjected to change without notice

Web:<http://www.faradigm.com>  
 Tel. : +91-755-2463593,4276335  
 Email: [ucap@aartechsolonics.com](mailto:ucap@aartechsolonics.com)

Aartech Solonics Ltd.